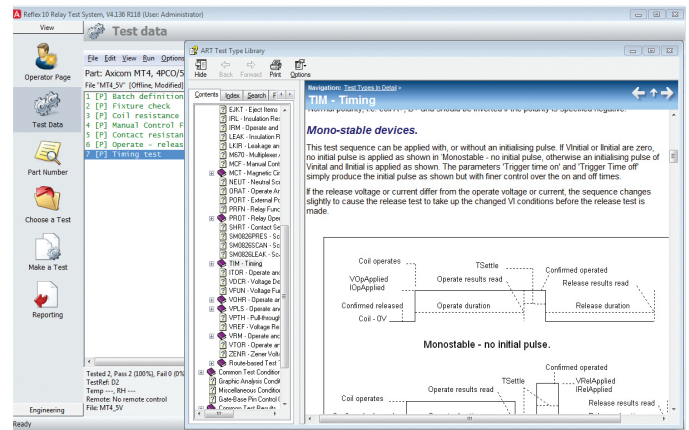
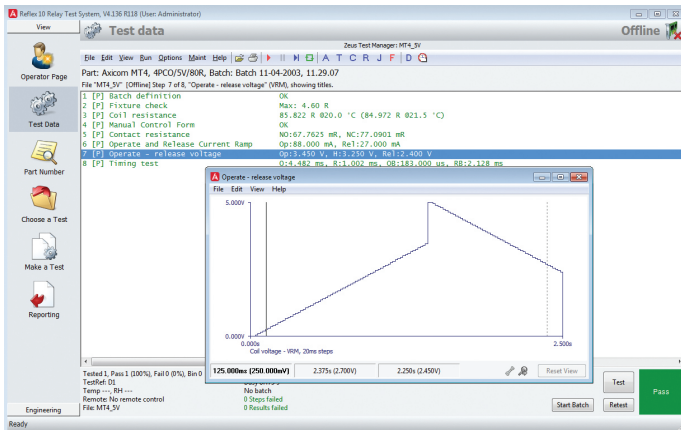


ARTWORKS v5 - Parametric Relay Test Systems

Software



Artworks provides a feature rich user interface for ART's RT290 and full range of Reflex test systems. It integrates customisable spreadsheet based test program generation, user interface and report generation all with built-in context sensitive help documentation.

Key Features

- ARTWorks 5.0 is fully supported by ART
- USB interfacing via ASY5672 adaptor or ASY5765 system module
- Windows 10/8/7/XP 64-bit & 32-bit compatibility
- Enhanced User interface for both desktop PC and touchscreen tablet use
- Operator screen charting features
- Part number wizard 'Find' relay button
- Batch suspension and resume
- User-defined variable capability
- Enhanced command-line control
- Built-in report generation and export
- On-line context sensitive help and PDF manuals

Overview

ArtWorks is a collective name for the presentation and functionality with which Applied Relay Testing's relay test systems display their capability to the user. Where there are differences between the systems, these are largely confined to throughput, numbers of contacts that can be tested and any purchased options, leaving the software presentation and use almost unaffected.

Each of the main features are typically exposed as a unique page that can be activated by clicking on a page shortcut icon at the left. This page management is controlled by a general display shell which is highly customisable with built-in user levels allowing you to show or hide pages to various users. When the software is first installed, there are a number of default pages installed. You can add or delete these pages at will.

Operating system	Microsoft Windows 10 / 8 / 7 / XP Pro SP3 64- bit / 32-bit
RAM	500 MB (4 GB recommended)
Hard disk space	150 MB free min
Display	1920 x 1080 recommended
Supplied	CD/DVD ROM / web link

Scan for Website:



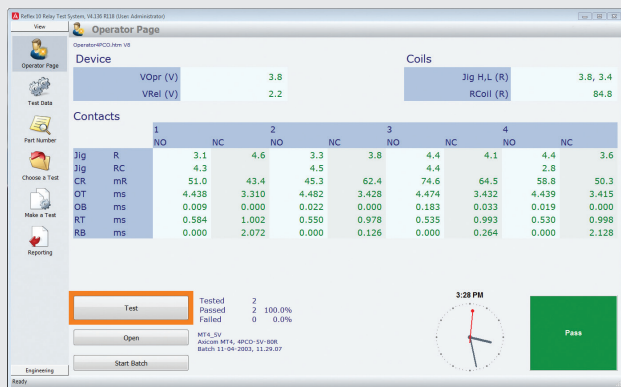
Product Features

Test data page

Artworks is a highly flexible test execution engine that is compatible with all of ART's previous test software. It uses our standard R90 test program format to build on over 15 years of user's installed test program base and familiarity.

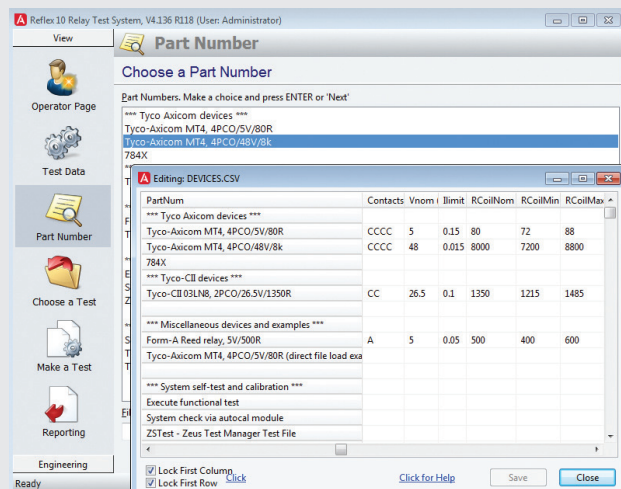
Operator page

This page 'pulls' its data values from the test program and displays relay parameters and fixed text in a clear, tabular manner. Layouts can easily be customised by the end-user to suit the application.



Test program generation from a part number

For users with many similar relay devices tests but various parameter values, these values can be entered along a row of a 'spreadsheet' together with the part number and a 'generic' test program common to all devices. The actual required test program is then generated automatically before testing start. This vastly decreases test program creation and editing time.



Test program generation from a data sheet

Relay data sheet values can be entered to create a test program to 'get you started'. It is a useful tool for quick 'look-see' and as an aid to first time users.

Batch management and parameter data logging

Batch testing creates a stored DBASE4 database file with common data such as Operator Name, Part Number etc and then stores nominated device test result parameters for each test or retest. The resulting batch database file can be used to produce one of our reports, display data in Microsoft Excel or processed externally.

Reporting

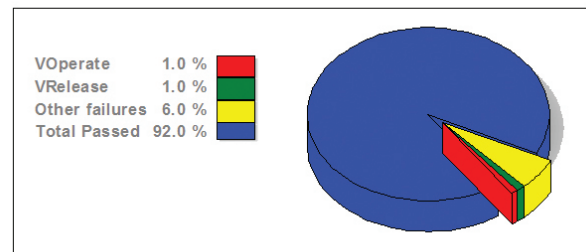
Device testing creates a batch data file which can be recalled to produce a report that contains a batch summary with totals, yields etc and detail sections with both graphical and tabular data presented. The report is controlled by templates that can be fully customised and then chosen at report time in a Microsoft Word compatible format for ease of editing and distribution.

Section 2, Operate, release and hold voltages

Summary values - Operate, release and hold voltages

Item	Units	Total	Yield %	Low lim	High lim	Min val	Max val	StDev
VOperate	V	0	0.0	0.0	5.0			
VRelease	V	0	0.0	0.0	5.0			
VHold	V	0	0.0	0.0	5.0			

Failure totals chart - operate, release and hold voltages



User levels and passwords

To ensure that the user cannot go into or modify data in parts of the system that are not appropriate, three levels of user are defined - Operator, Supervisor and Administrator. All of the pages and features can be programmed to permit access from any of these levels as appropriate for your needs.

Resource explorer

This feature provides a structured access to the 'inside' of the system with a view of each feature and access to useful custom settings. This tool can be used to monitor hardware activity, calibration, view installed hardware and to transfer the settings of one system entirely to another when quickly setting up a duplicate system.