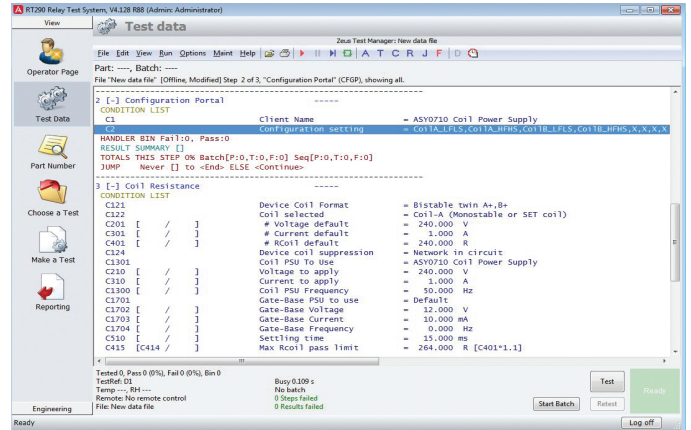


ASY0710A – AC/DC COIL PSU

Accessories



The ASY0710A coil power supply unit extends the coil drive capability to ART's RT290 parametric relay test system providing both high power DC and AC coil drive capability. The unit is fully compatible with the Artworks software test programming environment.

Key Features

- High pulsed drive current for PWM relay types
- Adds AC coil drive to DC only systems
- Turn key solution for RT290 users
- Controlled by the relay test program
- Auxiliary power rail for timing relays
- Optional 8 way multiplexer
- Safety interlock
- Force / Sense continuity measurement
- 19" rack mounting
- Supplied with documentation and screened cables

Overview

The ASY0710A is designed to be used in conjunction with an RT290 parametric relay test system to enhance the coil drive capability for AC or DC coil relays or those requiring high pulse currents such as PWM based designs.

An auxiliary low power amplifier and transformer circuit may also be fitted for use with devices requiring a control pin such as timing relays and FET or transistor controlled relays.

The ASY0710A unit is designed on the principle of using a linear audio power amplifier circuit to drive a step up transformer which provides the main drive to the device under test coil circuitry. For DC relays and / or control pins a bridge rectifier circuit may be enabled to rectify the AC waveform.

AC output	0 - 250 Vrms / 50 - 400Hz
DC output	0 - 380 V
Coil power	40 W
Supply	115 / 230 V , 50 / 60 Hz
Dimensions	19" rack mounting, 4U high, 500mm (D)
Weight	21 kg (46 lb)

Scan for Website:



Product Features

Modes of operation

The unit can be used in the following modes:

- Bypassed – device coil connections from parametric test system coil PSU
- Coil A - Main coil PSU routed to device coil A (Set coil)
- Coil B - Main coil PSU routed to device coil B (Reset coil)
- Control pin - Auxiliary coil PSU routed to device control pin

Multiplexing

An optional 8 x 3 multiplexer can be used to route Coil A, Coil B or Control Pin to any of 8 Kelvin device pins. This is useful when using a universal device adaptor to connect to relays with different physical coil pin locations.

The ASY0725 Device Multiplexer can also be used to provide programmable mapping of device pins between coil and contacts for relays with up to 8 pole changeover contacts.

Software control

A configuration portal (CFGP) test step within the RT290 test sequence may be used to configure the multiplexer routing.

High pulsed drive current

The unit can control relays which incorporate pulsed width modulation (PWM) techniques which require pulsed high drive currents. Pulsed currents in excess of 2.5 Amps can be tolerated.

Triggered switching

High speed solid state switches are used to allow the coil outputs to be triggered either on or off when performing timing critical tests.

Kelvin connections

All outputs are designed to give a 4 terminal device connection.

Auxiliary power supply

An additional power supply is provided with 10% of the current drive capability of the main PSU. This may be used for driving the control pin of timing relays.

Cabling

All the necessary cabling to connect the module to the parametric test system is supplied with the unit. Please specify the test system to be used at the time of purchase to ensure the correct interface cables are supplied.

Signal quality

The case uses earth bonded all-steel construction to provide a high level of electrical screening from external noise sources. All parametric signal wires are fully screened.

Output ranges

The main coil PSU features the following ranges:

- 0-25, 0-130, 0-250 Vac
- 0-40, 0-200, 0-380 Vdc

An optional high voltage range covering 0-420 Vac / 0-600 Vdc can also be requested.

Current measurement ranges

The following coil current measurement ranges are provided:

- 0-280 mA and 0-2.8 Amps AC
- 0-400 mA and 0-4 Amps DC

Optional items

Bench top case

Grey two tone 19" 4U bench top case.
Order code: Case-4U

Front panel device connector pack

A pack of mating front panel device connectors and metal back shells.
Order code: ASY0710A-CON



See also:
ASY0725 Device multiplexer
for multiplexing between coil
and contacts.